

McHUGH'S LANDSCAPING

PO BOX 908
DELRAN, NJ 08075
(856) 461-5154
FAX- (856) 461-6135

DATE: 6/06/20


PESTICIDE NOTIFICATION

CUSTOMER: DELRAN BOE

ADDRESS: 52 HARTFORD RD. . DELRAN, NJ 08075

TREATED AREAS: ATHLETIC FIELDS AT DHS, DMS & DIS

DATE & TIME OF APPLICATION: FRIDAY, 6/12/20, 8:00 AM TO 3:00 PM
FIELDS MUST BE CLOSED.


MATERIALS USED: 'LESCO BANDIT INSECTICIDE 75 WSP'
EPA# 432-1318

'SPECTATOR FUNGICIDE'
EPA# 62719-346-10404

JAMES J. MCHUGH, (609) 352-5755
MCHUGH'S LANDSCAPING

PLEASE RETAIN FOR YOUR RECORDS.

LESCO[®] **Bandit**[™] 75 WSP
INSECTICIDE

INSECTICIDE

Specimen Label

* For foliar and systemic insect control in turfgrass (including sod farms), landscape
ornamentals, fruit and nut trees, and interior plantscapes.

ACTIVE INGREDIENT:

Imidacloprid, 1-[(6-Chloro-3-pyridinyl)methyl]-N- nitro-2-imidazolinimine	75%
OTHER INGREDIENTS:	25%
Total:	100%

*Protected by U.S. Patent No. 4,742,060

Keep water soluble packets in this container and store in a cool dry place but not below freezing (32°F).

Do Not Remove Packets From Container Except For Immediate Use.

EPA Reg. No. 432-1318

EPA Est. No. 33967-NJ-1

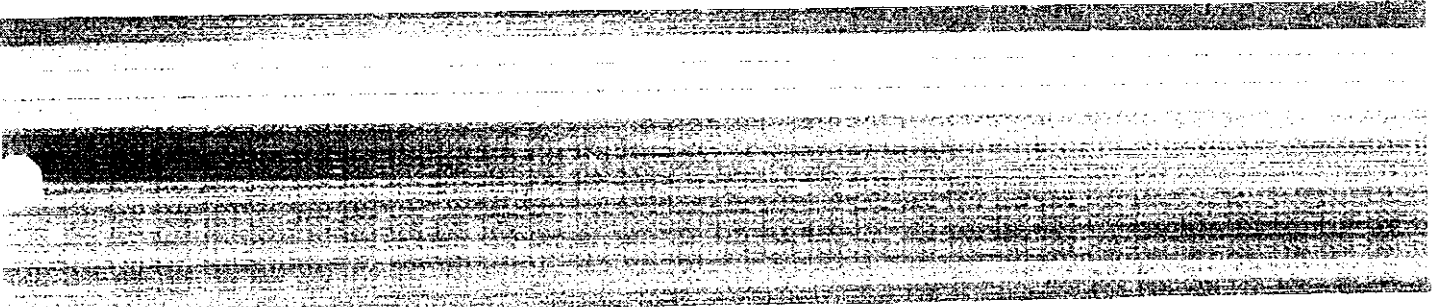
STOP - Read the label before use.
Keep out of reach of children.

CAUTION

PRECAUCION AL USUARIO: Si usted no puede leer o entender inglés, no use este producto hasta que la
etiqueta le haya sido explicada ampliamente.

(TO THE USER: If you cannot read or understand English, do not use this product until the label has been
fully explained to you.)

NET CONTENTS:



PRECAUTIONARY STATEMENTS

HAZARDS TO HUMANS AND DOMESTIC ANIMALS

CAUTION: Harmful if swallowed, inhaled, or absorbed through skin. Causes eye irritation. Avoid contact with skin, eyes, or clothing. Avoid breathing dust or vapor. Wash thoroughly with soap and water after handling. Remove contaminated clothing and wash before reuse. Keep children or pets off treated area until spray is dry.

Applicators and Other Handlers Must Wear:

- Long-sleeved shirt and long pants
- Chemical resistant gloves made of any waterproof material such as barrier laminate, butyl rubber, nitrile rubber, neoprene rubber, natural rubber, polyethylene, polyvinylchloride (PVC) or viton.
- Shoes plus socks

Follow manufacturer's instructions for cleaning/maintaining personal protective equipment. PPE. If no such instructions for washables, use detergent and hot water. Keep and wash PPE separately from other laundry.

Engineering controls statements:

- When handlers use closed systems, enclosed cabs, or aircraft in a manner that meets the requirements listed in the Worker Protection Standard (WPS) for agricultural pesticides [40 CFR 170.240(d)(4-6)], the handler PPE requirements may be reduced or modified as specified in the WPS.

User Safety Recommendations

User should:

- Wash hands before eating, drinking, chewing gum, using tobacco or using the toilet.
- Remove clothing immediately if pesticide gets inside. Then wash thoroughly and put on clean clothing.
- Remove PPE immediately after handling this product. Wash the outside of gloves before removing. As soon as possible, wash thoroughly and change into clean clothing.

FIRST AID

If swallowed	<ul style="list-style-type: none"> • Call a poison control center or doctor immediately for treatment advice. • Have person sip a glass of water if able to swallow. • Do not induce vomiting unless told to do so by a poison control center or doctor. • Do not give anything by mouth to an unconscious person.
If on skin or clothing	<ul style="list-style-type: none"> • Take off contaminated clothing. • Rinse skin immediately with plenty of water for 15 to 20 minutes. • Call a poison control center or doctor for treatment advice.
If in eyes	<ul style="list-style-type: none"> • Hold eye open and rinse slowly and gently with water for 15 to 20 minutes. Remove contact lenses, if present, after the first 5 minutes, then continue rinsing eye. • Call a poison control center or doctor for treatment advice.

In case of emergency call toll free the Bayer Environmental Science Emergency Response Telephone No. 1-800-334-7577. Have a product container or label with you when calling a poison control center or doctor, or going for treatment.

Note To Physician: No specific antidote is available. Treat the patient symptomatically.

ENVIRONMENTAL HAZARDS

This product is highly toxic to aquatic invertebrates. Do not apply directly to water, or to areas where surface water is present or to intertidal areas below the mean high water mark. Do not contaminate water when disposing of equipment washwaters.

This product is highly toxic to bees exposed to direct treatment or residues on blooming crops or weeds. Do not apply this product or allow it to drift to blooming crops or weeds if bees are visiting the treatment area. This chemical demonstrates the properties and characteristics associated with chemicals detected in groundwater. The use of this chemical in areas where soils are permeable, particularly where the water table is shallow, may result in groundwater contamination.

Do not formulate this product into other end-use products.

DIRECTIONS FOR USE

It is a violation of Federal law to use this product in a manner inconsistent with its labeling.

Do not apply this product in a way that will contact workers or other persons, either directly or through drift. Only protected handlers may be in the area during application. For any requirements specific to your State or Tribe, consult the agency responsible for pesticide regulation.

AGRICULTURAL USE REQUIREMENTS

Use this product only in accordance with its labeling and with the Worker Protection Standard, 40 CFR part 170. This Standard contains requirements for the protection of agricultural workers on farms, forests, nurseries, and greenhouses, and handlers of agricultural pesticides. It contains requirements for training, decontamination, notification, and emergency assistance. It also contains specific instructions and exceptions pertaining to the statements on this label about personal protective equipment (PPE) and restricted-entry interval. The requirements in this box only apply to uses of this product that are covered by the Worker Protection Standard.

Do not enter or allow worker entry into treated areas during the restricted-entry interval (REI) of 12 hours.

Exception: If the product is applied by drenching, the Worker Protection Standard, under certain circumstances, allows workers to enter the treated area if there will be no contact with anything that has been treated.

PPE required for early entry to treated areas that is permitted under the Worker Protection Standard and that involves contact with anything that has been treated, such as plants, soil, or water is:

- Coveralls
- Chemical resistant gloves made of any waterproof material such as barrier laminate, butyl rubber, nitrile rubber, neoprene rubber, natural rubber, polyethylene, polyvinylchloride (PVC) or viton.
- Shoes plus socks

NON-AGRICULTURAL USE REQUIREMENTS

The requirements in this box apply to uses of this product that are NOT within the scope of the Worker Protection Standard for agricultural pesticides (40 CFR part 170). The WPS applies when this product is used to produce agricultural plants on farms, forests, nurseries, or greenhouses.

Keep children and pets off treated area until dry.

APPLICATION TO TURFGRASS

LESCO® BANDIT 75 WSP insecticide can be used for the control of soil inhabiting pests of turfgrass, such as Northern & Southern masked chafers, *Cyclocephala borealis*, *C. immaculata*, and/or *C. lurida*; Asiatic garden beetle, *Maladera castanea*; European chafer, *Rhizotrogus*

majalis; Green June beetle, *Cotinis nitida*; May or June beetle, *Phyllophaga* spp.; Japanese beetle, *Popillia japonica*; Oriental beetle, *Anomala orientalis*; Billbugs, *Sphenophorus* spp.; Annual bluegrass weevil, *Hyperodes* spp.; Black turfgrass ateniid, *Ataenius spretulus* and *Aphodius* spp.; European crane fly, *Tipula paludosa*; and mole crickets, *Scapteriscus* spp.. LESCO® BANDIT 75 WSP Insecticide can also be used for the suppression of cutworms and chinchbugs in turfgrass areas. LESCO® BANDIT 75 WSP Insecticide can be used as directed on turfgrass in sites such as home lawns, business and office complexes, shopping complexes, multi-family residential complexes, golf courses, airports, cemeteries, parks, playgrounds, athletic fields and sod farms.

The active ingredient in LESCO® BANDIT 75 WSP Insecticide has sufficient residual activity so that applications can be made preceding the egg laying activity of the target pests. High levels of control can be achieved when applications are made preceding or during the egg laying period. The need for an application can be based on historical monitoring of the site, previous records or experiences, current season adult trapping or other methods. Optimum control will be achieved when applications are made prior to egg hatch of the target pests, followed by sufficient irrigation or rainfall to move the active ingredient through the thatch.

Applications should not be made when turfgrass areas are waterlogged or the soil is saturated with water. Adequate distribution of the active ingredient cannot be achieved when these conditions exist. The treated turf area must be in such a condition that the rainfall or irrigation will penetrate vertically in the soil profile. Applications cannot exceed a total of 8.6 oz (0.4 lb of active ingredient) per acre per year.

Application Equipment for Use on Turfgrass

Apply LESCO® BANDIT 75 WSP Insecticide in sufficient water to provide adequate distribution in the treated area. The use of accurately calibrated equipment normally used for the application of turfgrass insecticides is required. Use equipment which will produce a uniform, coarse droplet spray, using a low pressure setting to eliminate off target drift. Check calibration periodically to ensure that equipment is working properly.

APPLICATION TO ORNAMENTALS

LESCO® BANDIT 75 WSP Insecticide is for use on ornamentals in commercial and residential landscapes and interior plantscapes. LESCO® BANDIT 75 WSP Insecticide is a systemic product and will be translocated upward into the plant system from root uptake. To assure optimum effectiveness, the product must be placed where the growing portion of the target plant can absorb the active ingredient. The addition of a nitrogen containing fertilizer, where applicable, into the solution may enhance the uptake of the active ingredient. Application can be made by foliar application or soil applications; including soil injection, drenches, and broadcast sprays. Foliar applications offer locally systemic activity against insect pests.

When making soil applications to plants with woody stems, systemic activity will be delayed until the active ingredient is translocated throughout the plant. In some cases, this translocation delay could take 60 days or longer. For this reason, applications should be made

prior to anticipated pest infestation to achieve optimum levels of control. For outdoor ornamentals, **broadcast applications** cannot exceed a total of 8.6 oz (0.4 lb of active ingredient) per acre per year.

Ant Management Programs

Use LESCO® BANDIT 75 WSP to control aphids, scale insects, mealybugs and other sucking pests on ornamentals to limit the honeydew available as a food source for ant populations. LESCO® BANDIT 75 WSP applications can be then be supplemented with residual sprays, bait placements or other ant control tactics to further reduce the pest population.

NOTE: Not for use in commercial greenhouses, nurseries, or on grasses grown for seed, or on commercial fruit and nut trees.

Application Equipment for Foliar Applications

LESCO® BANDIT 75 WSP Insecticide mixes readily with water and may be used in many types of application equipment. Mix product with the required amount of water and apply as desired dependent upon the selected use pattern.

When making foliar applications on hard to wet foliage such as holly, pine, or ivy, the addition of a spreader/sticker is recommended. If concentrate or mist type spray equipment is used, an equivalent amount of product should be used on the area sprayed, as would be used in a dilute application.

MIXING: Within each foil pouch is a clear inner packet containing LESCO® BANDIT 75 WSP Insecticide. The clear inner packet is **water soluble**. Do not allow packets to become wet prior to adding to the spray tank. Do not handle the clear inner packets with wet hands or wet gloves. Rough handling may cause breakage. Reseal outer carton to protect remaining packets.

To prepare the spray mixture, remove the outer foil pouch and drop the required number of **unopened** clear water soluble packets, as determined under "Recommended Applications", into the spray tank while filling with water to the desired level. Operate the agitator while mixing. Depending on the water temperature and the degree of agitation, the packets should be completely dissolved within a few minutes from the time they are added to the water. Cooler water temperatures increase the time needed for the inner packet to dissolve completely.

NOTE: Do not use LESCO® BANDIT 75 WSP packets in a tank-mix with products that contain Boron or release free chlorine. The resultant reaction of PVA and boron or free chlorine is a plastic which is not soluble in water or solvents such as diesel oils, kerosene, gasoline or alcohol. Do not attempt to use the WSP packets directly in diesel oils or summer spray type oils as in ULV or LV uses. PVA packets are water soluble not oil soluble. Use of chlorinated water is acceptable.

LESCO® BANDIT 75 WSP Insecticide has been found to be compatible with commonly used fungicides, miticides, liquid fertilizers, and other commonly used insecticides. Check physical compatibility using the correct proportion of products in a small jar test if local experience is unavailable.

Do not apply through any irrigation system.

RECOMMENDED APPLICATIONS		
CROP	PEST	DOSAGE LESCO® BANDIT 75 WSP
Turfgrasses	Larvae of: Annual bluegrass weevil Asiatic garden beetle Billbug Black turfgrass ateniuss Cutworm (suppression) European chafer	European crane fly Green June beetle Japanese beetle Northern masked chafer Oriental beetle <i>Phyllophaga</i> spp. Southern masked chafer
	For optimum control of grubs, billbugs, annual bluegrass weevil and European crane fly larvae, make application prior to egg hatch of the target pest. Be sure to read "APPLICATION EQUIPMENT" Section of this label.	
	Chinchbug (suppression)	Mole cricket
	For suppression of chinchbugs, make application prior to hatching of the first instar nymphs. For control of mole crickets make application prior to or during the peak egg hatch period. When adults or large nymphs are present and actively tunneling, LESCO® BANDIT 75 WSP application should be accompanied by a curative insecticide. Follow label instructions for other insecticides when tank-mixing.	
1.6 oz (1 Packet) per 3,250 to 11,000 sq ft		
1.6 oz (1 Packet) per 3,250 sq ft		
Consult your local State Agricultural Experiment Station, or State Extension Turf Specialists for more specific information regarding timing of application.		
NOTE: For optimum control, irrigation or rainfall should occur within 24 hours after application to move the active ingredient through the thatch. Do not apply more than 8.6 oz (0.4 lb of active ingredient) per acre per year. Avoid mowing turf or lawn area until after sufficient irrigation or rainfall has occurred so that uniformity of application will not be affected.		

RECOMMENDED APPLICATIONS		
For use only in and around industrial and commercial buildings and residential areas		
CROP	PEST	DOSAGE LESCO® BANDIT 75 WSP
Trees Shrubs Evergreens Flowers Foliage plants Groundcovers Interior plantscapes	Adelgids Aphids Japanese beetles Lace bugs Leaf beetles (including elm and viburnum leaf beetles) Leafhoppers (including grassy- winged sharpshooter)	Mealybugs Psyllids Sawfly larvae Thrips (suppression) Whiteflies
	Foliar Applications: Start treatments prior to establishment of high pest populations and reapply on an as needed basis.	
	White grub larvae (such as Japanese beetle larvae, Chafer, <i>Phyllophaga</i> spp., Asiatic garden beetle, Oriental beetle)	1.6 oz (1 packet) per 3,250 to 11,000 sq ft
	Broadcast Applications: Mix required amount of product in sufficient water to uniformly and accurately cover the area being treated. Do not use less than 2 gallons of water per 1000 sq ft. For optimum control, irrigate thoroughly to incorporate LESCO® BANDIT 75 WSP Insecticide into the upper soil profile. Refer to use directions specific for FLOWERS and GROUNDCOVERS concerning additional use directions.	

RECOMMENDED APPLICATIONS	
Trees, Shrubs, Flowers and Groundcovers	
For use only in and around industrial and commercial buildings and residential areas and state, national, and private wooded and forested areas to control the insect pests listed below:	
Adelgids	Flatheaded borers (including bronze birch borer and alder borer)
Aphids	Japanese beetles
Armored scales (suppression)	Lace bugs
Black vine weevil larvae	Leaf beetles (including elm and viburnum leaf beetles)
Emerald ash borer	Leafhoppers (including glassy-winged sharpshooter)
Eucalyptus longhorned borer	Mealybugs
	Pine tip moth larvae
	Psyllids
	Royal palm bugs
	Sawfly larvae
	Soft scales
	Thrips (suppression)
	White grub larvae
	Whiteflies
Trees	1.6 oz (1 packet) LESCO® BANDIT 75 WSP per 24 to 48 inches of cumulative trunk diameter
<p>Soil Injection: GRID SYSTEM: Holes should be spaced on 2.5 foot centers, in a grid pattern, extending to the drip line of the tree. CIRCLE SYSTEM: Apply in holes evenly spaced in circles, (use more than one circle dependent upon the size of the tree) beneath the drip line of the tree extending in from that line. BASAL SYSTEM: Space injection holes evenly around the base of the tree trunk no more than 6 to 12 inches out from the base.</p> <p>Mix required dosage in sufficient water to inject an equal amount of solution in each hole. Maintain a low pressure and use sufficient solution for distribution of the liquid into the treatment zone. For optimum control, keep the treated area moist for 7 to 10 days. Do not use less than 4 holes per tree.</p> <p>No Soil Injection Applications Allowed in Nassau or Suffolk Counties of New York.</p> <p>Soil Drench: Uniformly apply the dosage in no less than 10 gallons of water per 1000 square feet as a drench around the base of the tree, directed to the root zone. Remove plastic or any other barrier that will stop solution from reaching the root zone.</p> <p>For Control of Specified Borers: Application to trees already heavily infested may not prevent the eventual loss of the trees due to existing pest damage and tree stress.</p>	
Shrubs	1.6 oz (1 packet) LESCO® BANDIT 75 WSP per 24 to 48 ft of cumulative shrub height:
<p>Soil Injection: Apply to individual plants using dosage indicated. Mix required dosage in sufficient water to inject an equal amount of solution in each hole. Maintain a low pressure and use sufficient solution for distribution of the liquid into the treatment zone. Keep the treated area moist for 7 to 10 days. Do not use less than 4 holes per shrub.</p> <p>No Soil Injection Applications Allowed in Nassau or Suffolk Counties of New York.</p> <p>Soil Drench: Uniformly apply the dosage in no less than 10 gallons of water per 1000 square feet as a drench around the base of the shrub, directed to the root zone. Remove plastic or any other barrier that will stop solution from reaching the root zone.</p>	
Flowers and Groundcovers	1.6 oz (1 packet) LESCO® BANDIT 75 WSP per 8,250 to 11,000 sq ft
Apply as a broadcast treatment and incorporate into the soil before planting or apply after plants are established. If application is made to established plants, optimum control will be attained if area is irrigated thoroughly after application.	

RECOMMENDED APPLICATIONS				
For use only in and around residential areas				
CROP	PEST		RATE PER APPLICATION	
Pome Fruits	Aphids	Mealybugs*	1.6 oz (1 packet) per 300 gal of water	2.1 oz per acre
Apple	(except Woolly apple aphid)	San Jose Scale*		
Crabapple	Leafhoppers (including glassy-winged sharpshooter)			
Loquat	Leafminer			
Mayhaw				
Pear				
Pear (oriental)				
Quince				
<p>Apply specified dosage as foliar spray as needed after petal-fall is complete.</p> <p>For control of rosy apple aphid, apply prior to leafrolling caused by the pest.</p> <p>For first generation leafminer control, make first application as soon as petal-fall is complete. Greatest leafminer control will result from the earliest possible application. For second and succeeding generations of leafminer, optimal control is obtained from applications made early in the adult flight against egg and early instar larvae. A second application may be required 10 days later if severe pressure continues or if generations are overlapping. A single application may result in suppression only. LESCO® BANDIT 75 WSP will not control late stage larvae.</p> <p>For San Jose Scale, lime applications to the crawler stage. Treat each generation.</p> <p>For late season (preharvest) control of leafhopper species, apply LESCO® BANDIT 75 WSP while most leafhoppers are in the nymphal stage.</p> <p>For optimal control of mealybug, insure good spray coverage of the trunk and scaffolding limbs or other resting sites of the mealybug.</p> <p>Do not apply more than 2.1 ounces per acre in a single application. Do not make more than 5 applications.</p> <p>Allow 10 or more days between applications. Allow at least 7 days between last application and harvest.</p> <p>* Not for use in California for control on pears.</p>				

RECOMMENDED APPLICATIONS (continued)				
For use only in and around residential areas				
CROP	PEST		RATE PER APPLICATION	
Pecan*	Yellow pecan aphid	Pecan spittlebug	1.6 oz	2.1 oz
	Black margined aphid	Pecan stem phylloxera	(1 packet) per 300 gal	per acre
	Pecan leaf phylloxera		of water	
<p>Make foliar applications as pests begin to build before populations become extreme. Two applications at a 10 to 14 day interval may be required to achieve control. Scout and retreat if needed.</p> <p>Thorough uniform coverage of foliage is necessary for optimal control. Addition of an organosilicone-based spray adjuvant at a rate not to exceed the adjuvant manufacturer's recommended use rate may improve coverage.</p> <p>Do not apply more than a total of 6.3 ounces of LESCO® BANDIT 75 WSP per acre per year. Do not make more than 3 applications. Allow 10 or more days between applications.</p> <p>*The amount of LESCO® BANDIT 75 WSP required per acre will depend on tree size and volume of foliage present. The rate per acre is based on a standard of 400 gallons of dilute spray solution per acre for large trees.</p> <p>*Use on pecans not permitted in California unless directed by specific supplemental labeling.</p>				

RECOMMENDED APPLICATIONS			
For use only in and around industrial and commercial buildings and residential areas			
CROP	PEST	RATE PER APPLICATION	
Grapes	Leafhoppers (including glassy-winged sharpshooter)	1.6 oz	1.0 oz
	Mealybugs	(1 packet) per 300 gal of water	per acre
<p>Apply specified dosage as a foliar spray using 200 gallons of water per acre. Do not apply more than a total of 2.0 ounces of LESCO® BANDIT 75 WSP per acre per year. Allow at least 14 days between applications. Applications may be applied up to and including day of harvest.</p>			

RESTRICTIONS

Do not graze treated areas or use clippings from treated areas for feed or forage. Avoid runoff or puddling of irrigation water following application. Keep children and pets off treated area until dry. Avoid application of LESCO® BANDIT 75 WSP insecticide to areas which are water logged or saturated, or frozen, which will not allow penetration into the root zone of the plant. Do not apply more than 8.6 oz (0.4 lb of active ingredient) per acre per year.

Treated areas may be replanted with any crop specified on an imidacloprid label, or with any crop for which a tolerance exists for the active ingredient.

For crops not listed on an imidacloprid label, or for crops for which no tolerances for the active ingredient have been established, a 12-month plant-back interval should be observed.

STORAGE AND DISPOSAL

Do not contaminate water, food, or feed by storage or disposal.

Pesticide Storage: Store in a cool, dry place and in such a manner as to prevent cross contamination with other pesticides, fertilizers, food, and feed. Store in original container and out of the reach of children, preferably in a locked storage area. Handle and open container in a manner as to prevent spillage. If the container is leaking, invert to prevent leakage. If container is leaking or material spilled for any reason or cause, carefully dam up spilled material to prevent runoff. Refer to Precautionary Statements on label for hazards associated with the handling of this material. Do not walk through spilled material. Absorb spilled material with absorbing type compounds and dispose of as directed for pesticides below. In spill or leak incidents, keep unauthorized people away. You may contact the Bayer Environmental Science Emergency Response Team for decontamination procedures or any other assistance that may be necessary. The Bayer Environmental Science Emergency Response Telephone No. is 1-800-334-7577 or contact Chemtrec at 800-424-9300.

Pesticide Disposal: Wastes resulting from the use of this product may be disposed of on site or at an approved waste disposal facility.

Container Disposal: Completely empty container into application equipment. Then dispose of empty container in a sanitary landfill, by incineration or, if allowed by State and local authorities, by burning. If burned, stay out of smoke.

IMPORTANT: READ BEFORE USE

Read the entire Directions for Use, Conditions, Disclaimer of Warranties and Limitations of Liability before using this product.

If terms are not acceptable, return the unopened product container at once. By using this product, user or buyer accepts the following conditions, disclaimer of warranties and limitations of liability.

CONDITIONS: The directions for use of this product are believed to be adequate and should be followed carefully. However, because of manner of use and other factors beyond Bayer Environmental Science's control it is impossible for Bayer Environmental Science to eliminate all risks associated with the use of this product. As a result, crop injury or ineffectiveness is always possible. All such risks shall be assumed by the user or buyer.

DISCLAIMER OF WARRANTIES: BAYER ENVIRONMENTAL SCIENCE MAKES NO OTHER WARRANTIES, EXPRESS OR IMPLIED, OF MERCHANTABILITY OR OF FITNESS FOR A PARTICULAR PURPOSE OR OTHERWISE, THAT EXTEND BEYOND THE STATEMENTS MADE ON THIS LABEL. No agent of Bayer Environmental Science is authorized to make any warranties beyond those contained herein or to modify the warranties contained herein. Bayer Environmental Science disclaims any liability whatsoever for special, incidental or consequential damages, resulting from the use or handling of this product.

LIMITATIONS OF LIABILITY: THE EXCLUSIVE REMEDY OF THE USER OR BUYER FOR ANY AND ALL LOSSES, INJURIES OR DAMAGES RESULTING FROM THE USE OR HANDLING OF THIS PRODUCT, WHETHER IN CONTRACT, WARRANTY, TORT, NEGLIGENCE, STRICT LIABILITY OR OTHERWISE, SHALL NOT EXCEED THE PURCHASE PRICE PAID, OR AT BAYER ENVIRONMENTAL SCIENCE'S ELECTION, THE REPLACEMENT OF PRODUCT.

This Product is specially formulated and sold under license from Bayer only for the uses set forth on this label. The active ingredient of this product, formulations containing this active ingredient, and/or methods of making or using this active ingredient or its formulations may be the subject of one or more Bayer patents, including but not limited to U.S. Patent No. 4,742,060. The purchase and/or use of this product constitutes acceptance of a limited license to use this product only in strict accordance with the instructions set forth on this label. Any use of this product other than as expressly set forth on this label is prohibited and is not licensed through the purchase and/or use of this product and may result in the infringement of one or more Bayer patents and/or other intellectual property rights.

©2004 Bayer AG
Lesco[®] is a registered trademark of Lesco
BAND T is a trademark of Bayer



Bayer Environmental Science
A Business Group of Bayer CropScience LP

Bayer Environmental Science
95 Chestnut Ridge Road
Montvale, NJ 07645
www.bayerprocentral.com

040325B

15885 Sprague Road, Strongsville, OH 44136
EMERGENCY PHONE: LESCO: (800) 321-5325
CHEMTREC: (800) 424-9300

DATE ISSUED: 4/24/02
SUPERSEDES: New

I. PRODUCT IDENTIFICATION

PRODUCT NAME: LESCO[®] Spectator Turf and Ornamental Fungicide
Chemical Family: Triazole
Chemical Name/Synonyms: Propiconazole EC

II. COMPOSITION/INFORMATION ON INGREDIENTS

CHEMICAL NAME	%(by/wt.)	CAS #	PEL/TLV
Propiconazole: 1-((2,4-dichlorophenyl)-4-propyl-1,3-dioxolan-2-yl)-methyl)-1H,2,4-triazole	41.8	60207-90-1	Not Established
Propylene Glycol	2	57-55-6	50 ppm total, 10 mg/M ³ aerosol only AIHA WEEL
Aromatic 150 (Naphthalene)	43.5	64742-94-5	10 ppm ACGIH/OSHA** 15 ppm STEL

**ACGIH classification is A4, skin. A 'skin' notation following the exposure guideline refers to the potential for dermal absorption of the material. It is intended to alert the reader that inhalation may not be the only route of exposure and that measures to minimize dermal exposures should be considered.

III. HAZARDS IDENTIFICATION

EMERGENCY OVERVIEW: Primary Route(s) of Entry: Eyes, Skin, Inhalation, Ingestion

POTENTIAL HEALTH EFFECTS: Hazardous Chemical. Clear yellow liquid with an aromatic odor.

May cause eye irritation and/or corneal injury. May cause skin irritation. Toxic to aquatic organisms

EYE: May cause slight eye irritation and/or slight corneal injury. Vapors may irritate the eyes. For the solvent Aromatic 150, cataracts and other eye effects have been reported in humans repeatedly exposed to naphthalene vapor or dust.

SKIN: Prolonged or repeated exposure may cause skin irritation. A single prolonged exposure is not likely to result in the material being absorbed through the skin in harmful amounts. The dermal LD₅₀ has not been determined. Propiconazole did not cause allergic skin reactions when tested in guinea pigs.

INHALATION: Excessive exposure may cause irritation to upper respiratory tract (nose and throat). Signs and symptoms of excessive exposure may be central nervous system effects.

INGESTION: Single dose oral toxicity is low. Small amounts swallowed incidental to normal handling operations are not likely to cause injury; however, swallowing larger amounts may cause injury. If aspirated (liquid enters the lung), may cause lung damage or even death due to chemical pneumonia. Single dose oral LD₅₀ has not been determined.

MEDICAL CONDITIONS AGGRAVATED: Excessive exposure may cause respiratory irritation and central nervous system depression.

POTENTIAL ENVIRONMENTAL HAZARDS: Toxic to aquatic organisms.

IV. FIRST AID MEASURES

EYES: Hold eye open and rinse slowly and gently with water for 15 – 20 minutes. Remove contact lenses, if present, after the first 5 minutes, then continue rinsing the eye. Call a poison control center or doctor for treatment advice

SKIN: Remove contaminated clothing. Rinse skin immediately with plenty of water for 15 – 20 minutes. Call a poison control center or doctor for treatment advice.

INHALATION: Remove to fresh air. If not breathing, call 911 or an ambulance, then give artificial respiration, preferably mouth-to-mouth if possible. Call a poison control center or doctor for treatment advice.

INGESTION: Call a poison control center or doctor immediately for treatment advice. Do not give any liquid to person. Do not induce vomiting unless told to by a poison control center or doctor. Do not give anything by mouth to an unconscious person. Single dose toxicity is low; however, swallowing larger amounts may cause injury.

NOTES TO MEDICAL DOCTOR: There is no specific antidote for this product. Induce emesis or lavage stomach, taking care to avoid aspiration of stomach contents into lungs. Give a saline laxative and supportive therapy. This product may pose an aspiration pneumonia hazards. Contains petroleum distillate.

V. FIRE FIGHTING MEASURES

Flash Point (Method Used): 151.7F/66.5C

Lower Explosion Limits: Not Determined

NFPA/HMIS Rating: Health: 1

EXTINGUISHING MEDIA: Foam

Water Fog

Auto Ignition Temperature: Not Applicable

Upper Explosion Limits: Not Determined

Fire: 2 **Reactivity:** 1

Alcohol Foam

Dry Chemical

Other

CO₂

EXPLOSION HAZARDS: During a fire, smoke may contain the original material in addition to unidentified toxic and/or irritating compounds. Keep containers cool by spraying with water. Contain runoff to prevent entry into water or drainage systems.

FIRE FIGHTING PROCEDURES: Use positive-pressure, self-contained breathing apparatus and full protective equipment.

HAZARDOUS COMBUSTION PRODUCTS: Not Determined

VI. ACCIDENTAL RELEASE MEASURES

RELEASE NOTES: If material is spilled, absorb small spills with non-reactive material such as sand, sawdust, Zorbball, dirt or other non-combustible absorbent material and place into containers for disposal. Wash exposed body areas thoroughly after handling. Barricade the area of large spills and report them to ChemTrec at 1-800-424-9300.

VII. HANDLING AND STORAGE

GENERAL PROCEDURES: Handling: Do not swallow. Avoid contact with eyes, skin, and clothing. Avoid breathing vapors and spray mist. Handle concentrate in ventilated area. Wash thoroughly with soap and water after handling and before eating, chewing gum, using tobacco, using toilet or smoking. **Storage:** Product should be stored in compliance with local regulations. Store in a cool, dry, well-ventilated area in the original container. Protect from excessive heat and cold. Keep away from food, feedstuffs, and water supplies.

OTHER PRECAUTIONS: Keep out of reach of children.

VIII. EXPOSURE CONTROLS/PERSONAL PROTECTION

ENGINEERING CONTROLS: Provide general and/or local exhaust ventilation to control airborne levels below the exposure guidelines.

PERSONAL PROTECTION EQUIPMENT:

EYES AND FACE: Use chemical goggles. If vapor exposure causes eye discomfort, use a NIOSH approved full-face respirator.

RESPIRATORY: Atmospheric levels should be maintained below the exposure guidelines. When respiratory protection is required for certain operations, use a NIOSH approved air-purifying respirator.

GLOVES: Use gloves impervious to this material when prolonged or frequently repeated contact could occur.

PROTECTIVE CLOTHING: Applicators and all other handlers refer to product label for personal protective clothing and equipment

WORK HYGIENIC PRACTICES: Wash thoroughly with soap and water after handling and before eating, chewing gum, using tobacco, using toilet or smoking.